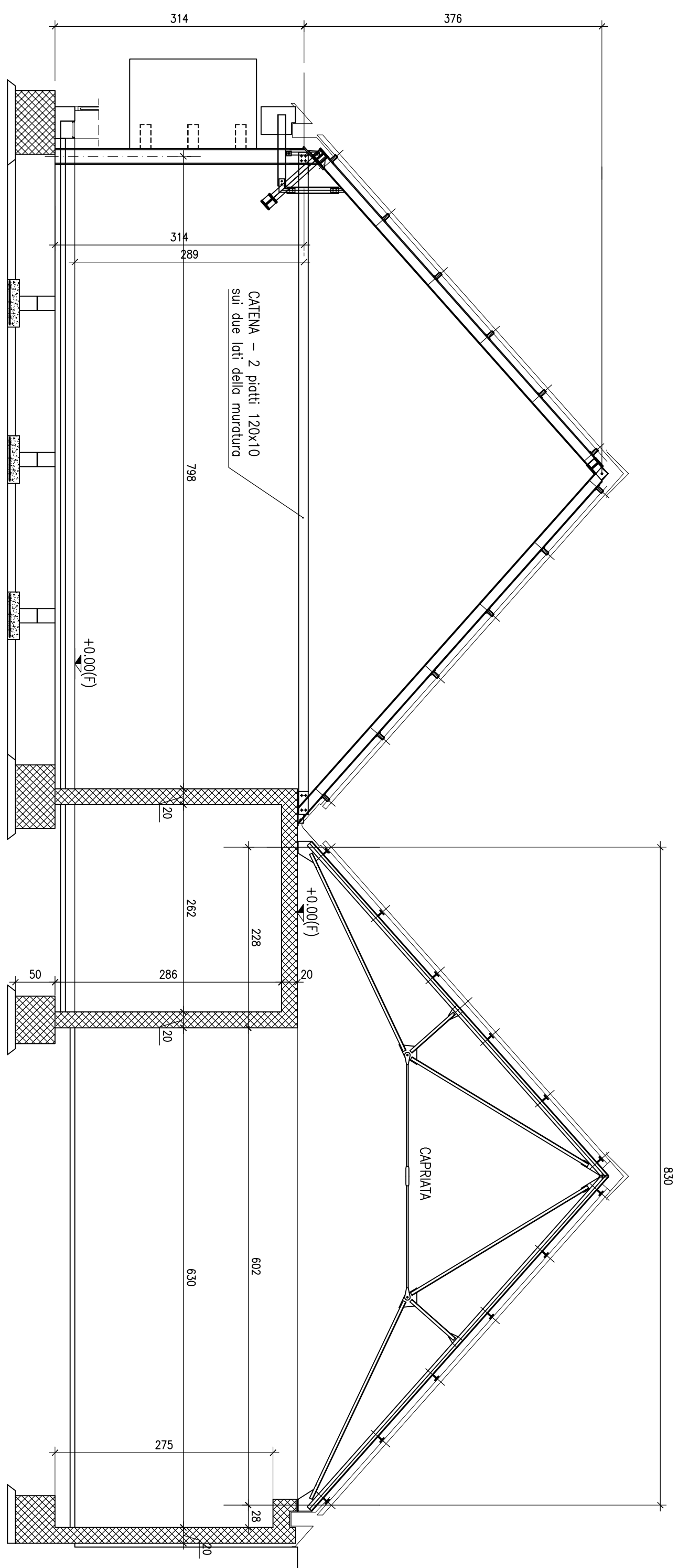


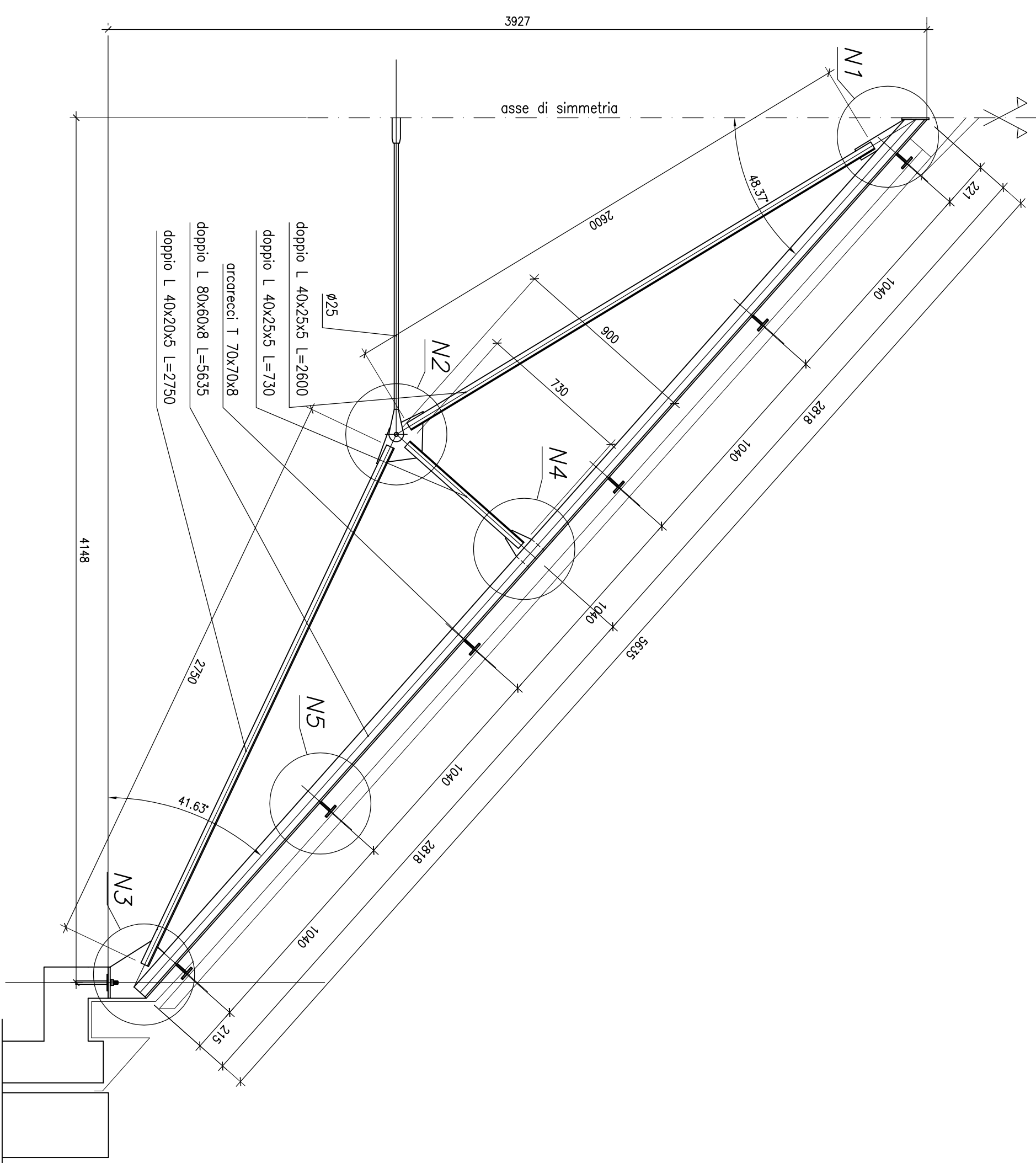
## SEZIONE A-A

scala 1:50



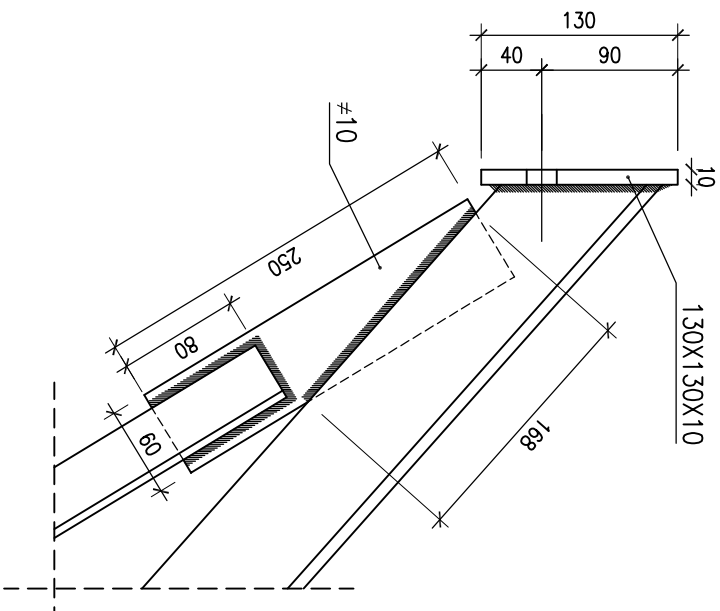
## CAPRIATA

Scala 1:20



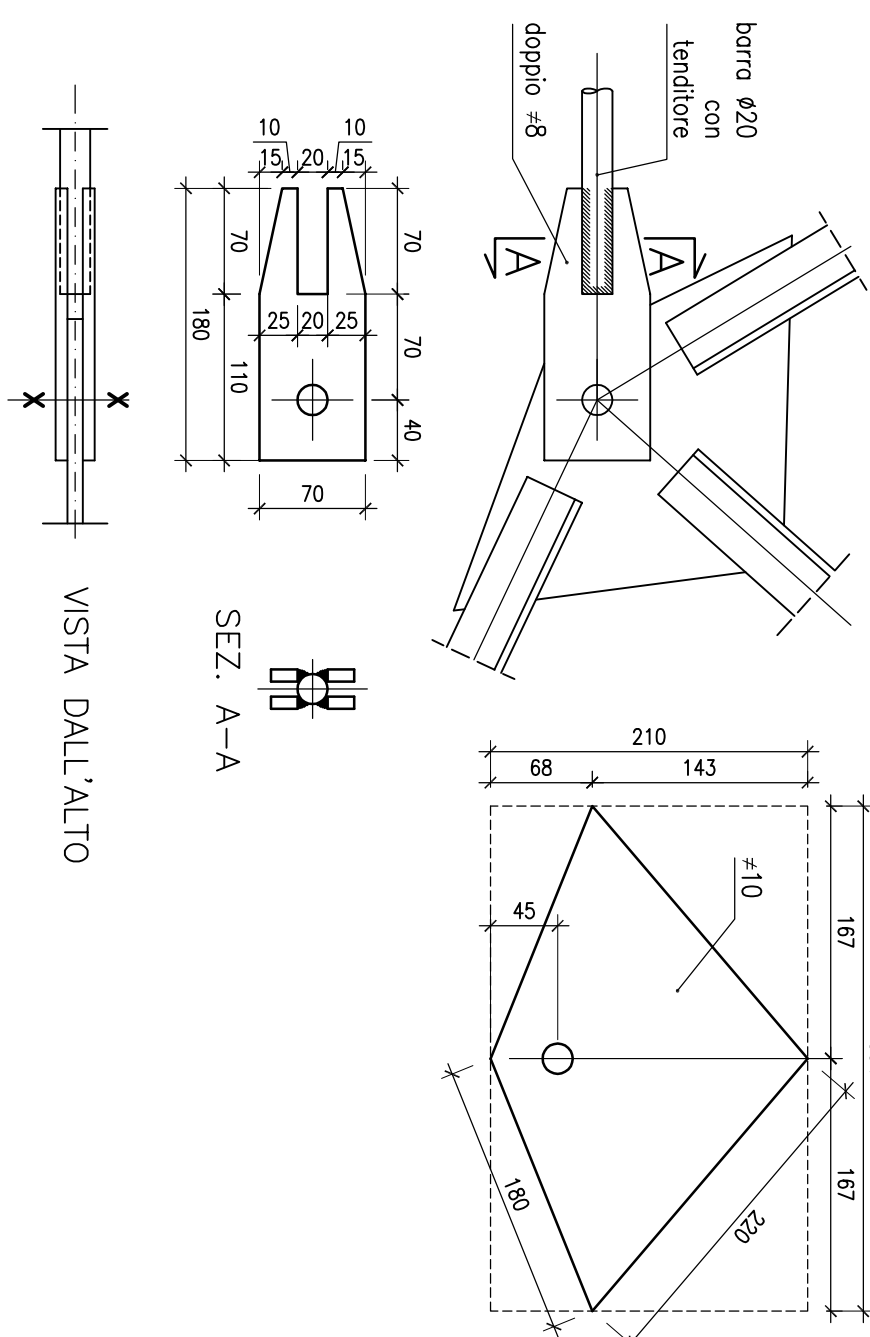
NODO N1

Scala 1:50-1:20



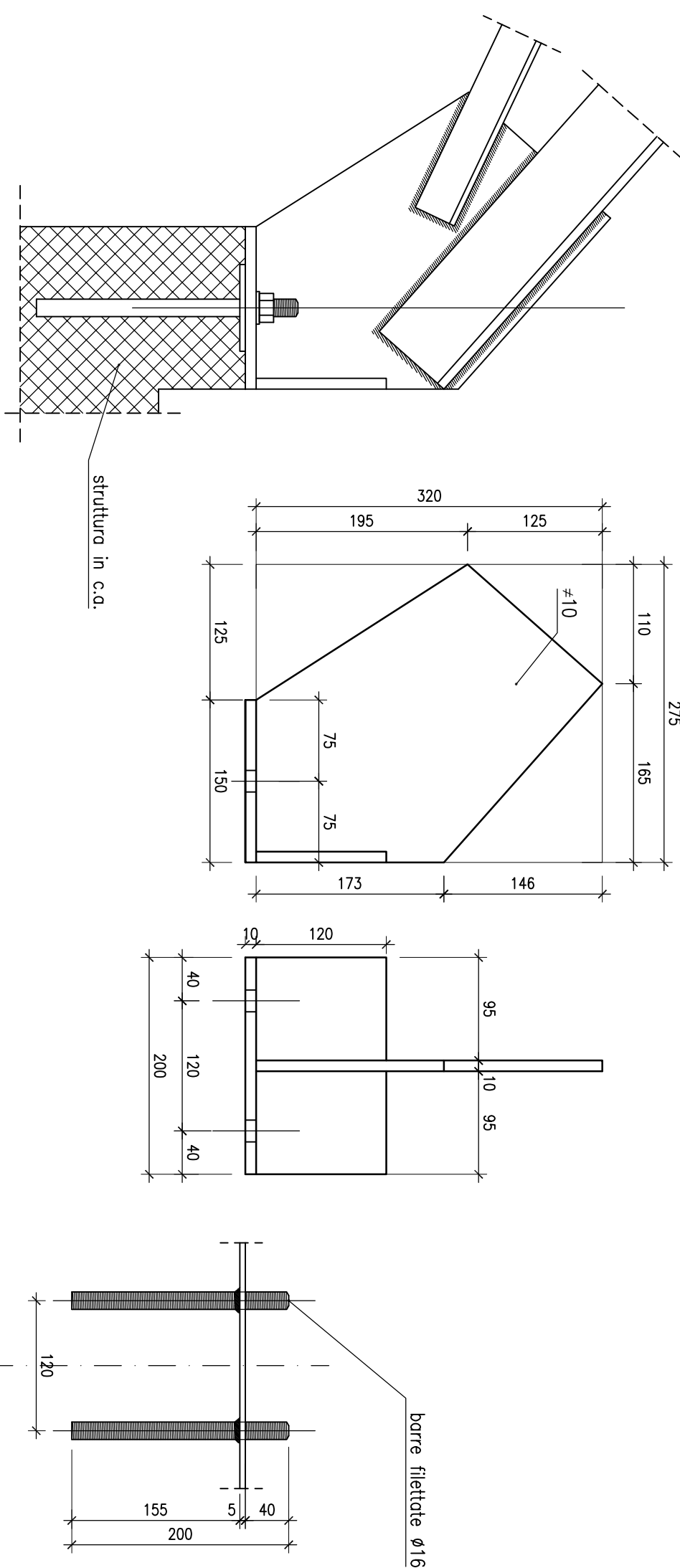
NODO N2

Scala 1:50-1:20



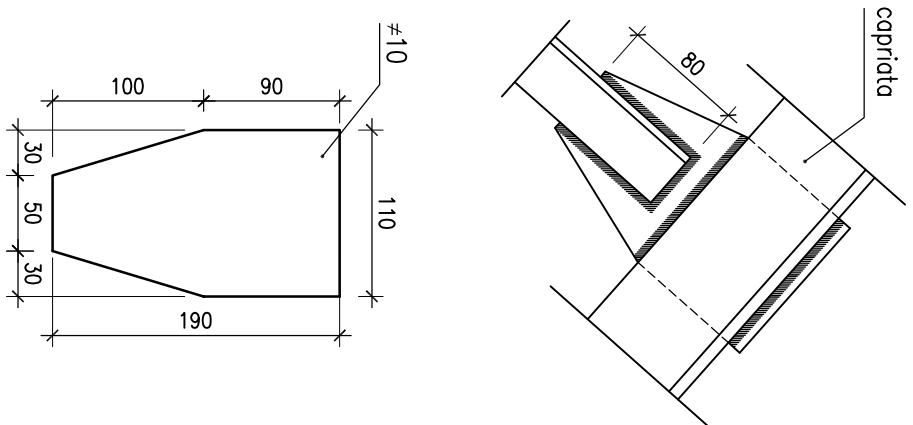
NODO N3

Scala 1:50-1:20



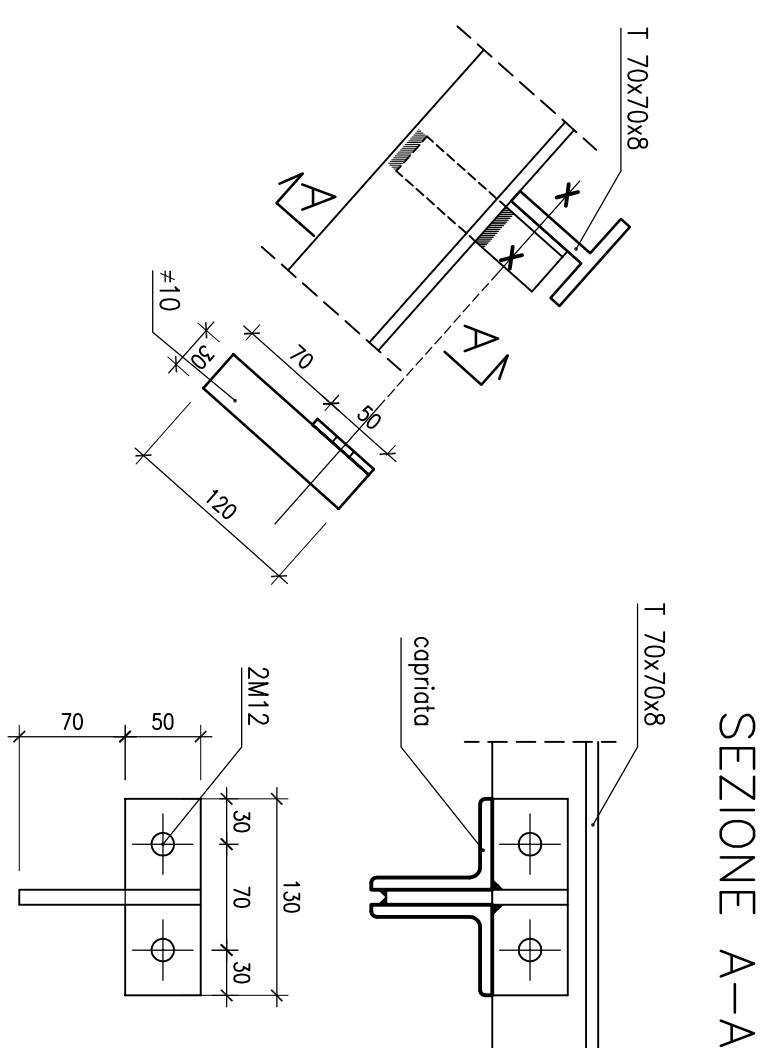
NODO N4

scale 1:50-1:20



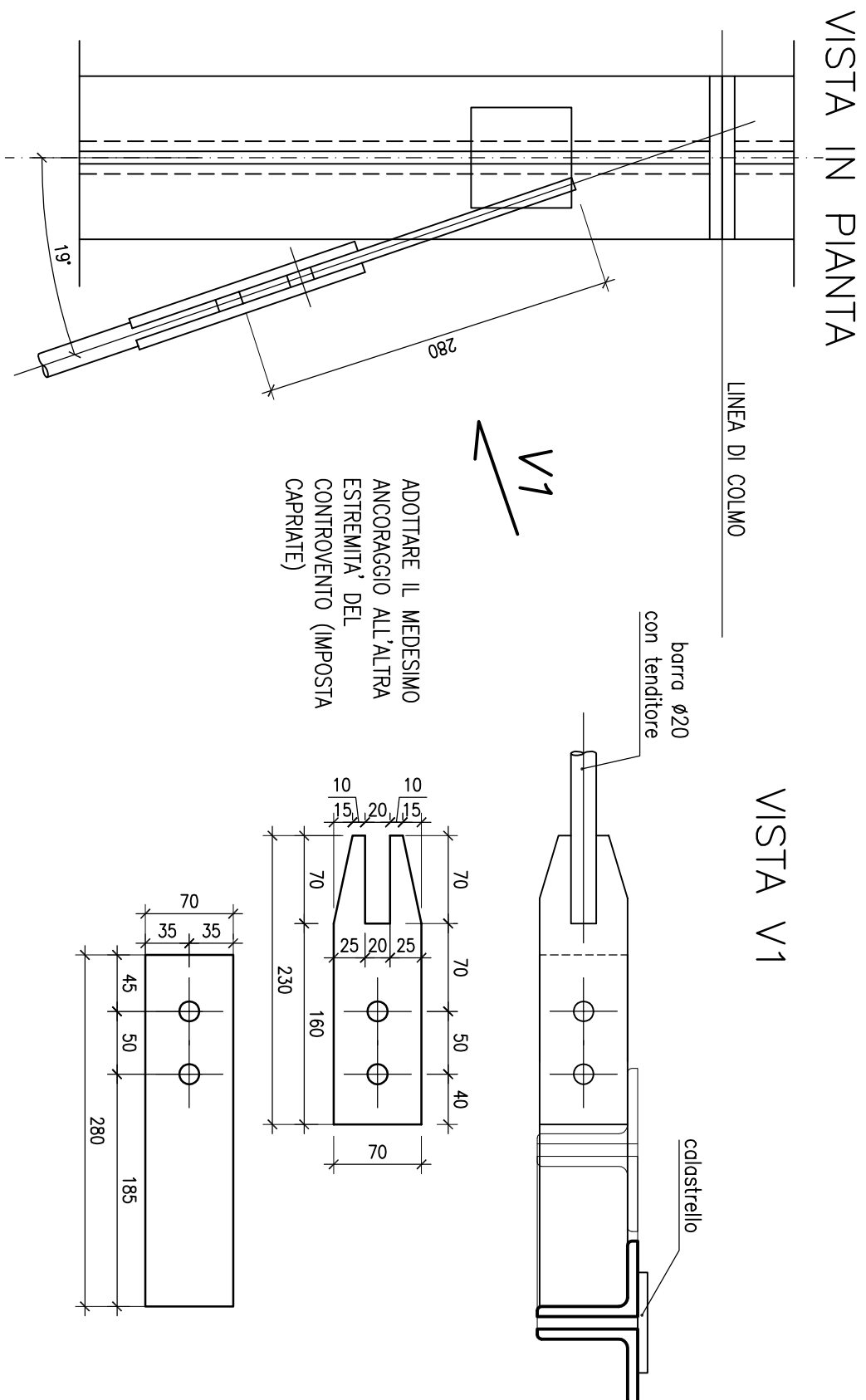
NODO N5

scala 1:50-1:20



*NODO N6 – TIRANTI CONTROVENTO TIPO C*

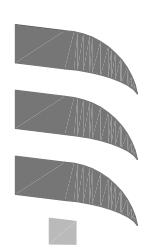
Scala 1:50-1:20



## MATERIALS

MATERIALI	
CALCESTRUZZO	Rak>=30MPa
MURATURA PORTANTE	Blocci in cls
ARMATURA AD ADERENZA MIGLIORATA	FeB44k, conf
CARPENTERIA METALLICA	Fe430B-Fe510B
BULLONI	8.8

PER QUANTO RIGUARDA LE PRESCRIZIONI OPERATIVE E LE SPECIFICHE DETTAGLIATE SUI MATERIALI ATTENERSI A QUANTO CONTENUTO NELLA TAVOLA S01



monceccchi.it

**MONCECCHI  
ASSOCIATI**  
studio di ingegneria

**IMBARCAZIONI AL LIDO COMUNALE"  
STRUTTURE - PROGETTO ESECUTIVO**

## SEZIONE A-A - COPERTURA RIMESSA BARCHE

committente	Comune di Mandello del Lario (LC) Piazza L. da Vinci, 6 23806 Mandello del Lario		progettisti	Ingg. Marco e Paolo Monecchi Via Fabiani, 33 23017 Montepogno (SO) tel./fax 0342-611834	
data	scadenza	data	ref.	tavola	
settembre 2008	1:50		B 07/11		

505